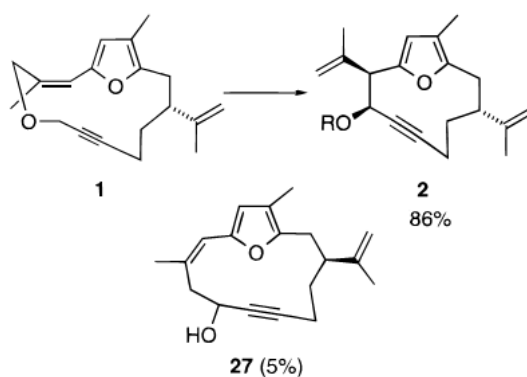
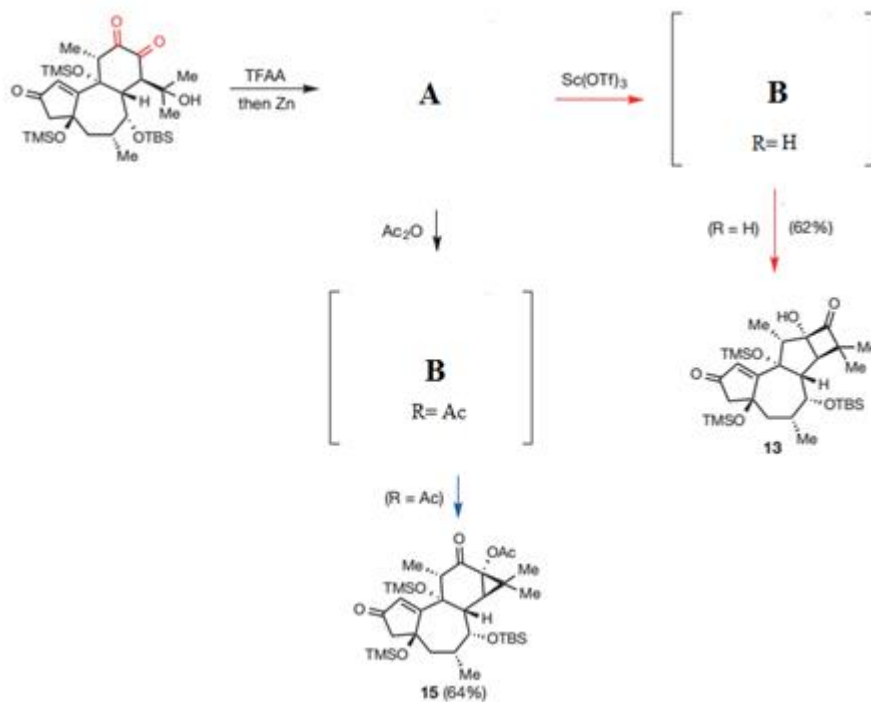


1.



- What reagents/conditions would cause the formation of **2** from **1**? Draw the mechanism.
- When this reaction was performed on a larger scale with the enantiomer of **1**, product **27** was also isolated. How was it formed? Draw the mechanism.

2.



- Product **A** is an isolable alpha-hydroxy ketone. What is it?
- B** is an intermediate towards the formation of products **13** and **15**. What is the general structure?
- Draw the mechanism for all transformations